

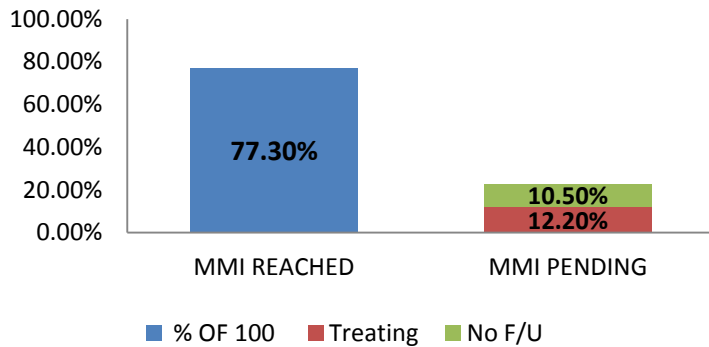
CASE SUMMARY AUDIT RESULTS

2014 Cases Summary

Out of ALL patients referred in the year 2014

MMI- MAXIMUM MEDICAL IMPROVEMENT

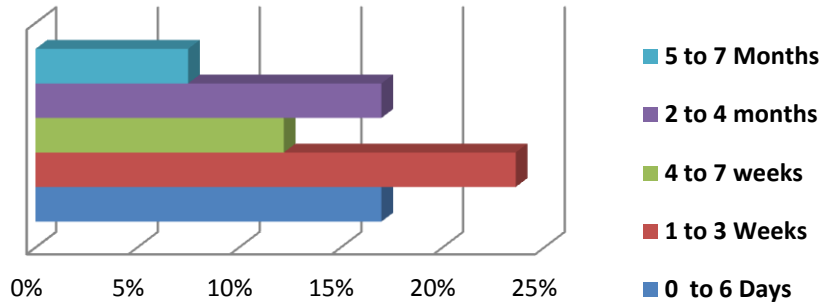
****77.3 % Reached MMI post date of initial visit**
 DWC 69 rendered by MD



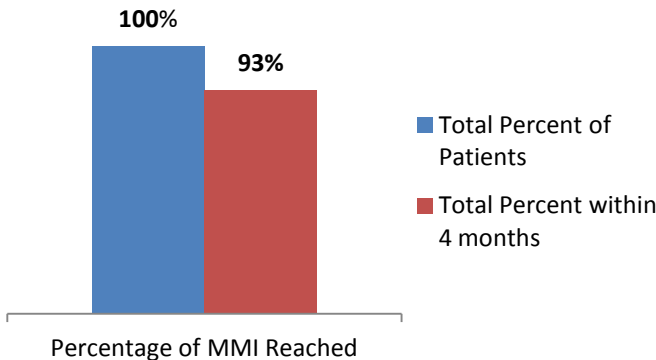
****22.7 %** have not been rendered MMI
 12.2% being treated /pending MMI
 10.55 % did not f/u /pending to F/U

0 to 6 days-17%
 1 to 3 weeks- 23.6%
 4 to 7 weeks- 12.2%
 2 to 4 months- 17%
 5 to 7 months- 7.5%

MMI TIMEFRAMES



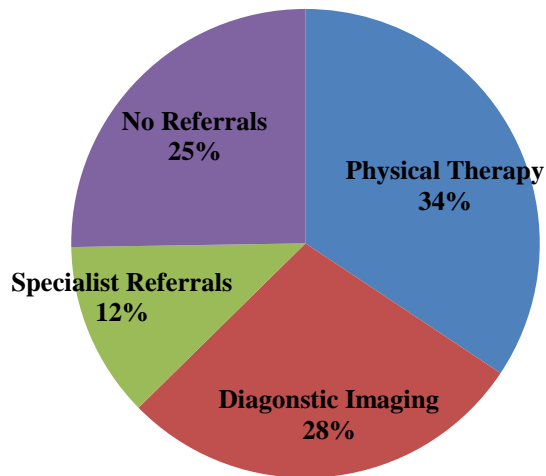
Based on above **93%** of the patients reached MMI within 4 months



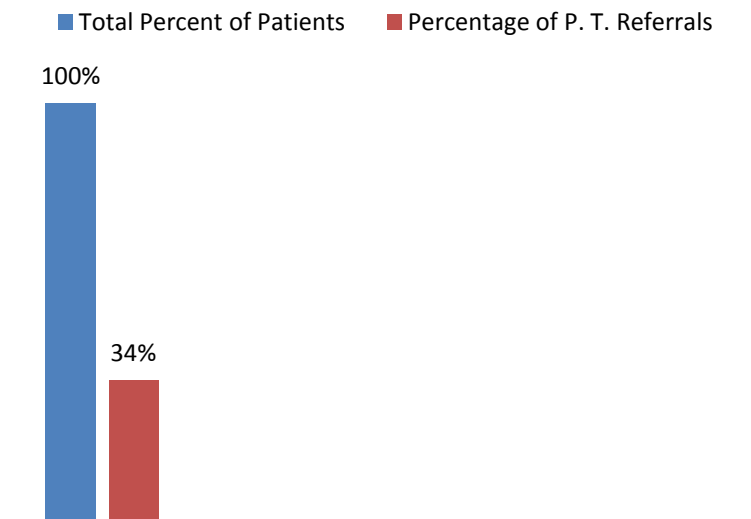
CASE SUMMARY AUDIT RESULTS

2014 Cases Summary

REFERRALS



PHYSICAL THERAPY



**34 % of patients referred to P.T.
**100% of these patients reached MMI
83% reached MMI within 4 month

DIAGNOSTIC IMAGING

**20.7 % of all patients

SPECIALIST REFERRALS

** 8.4 % of all patients

^ excluded the 9% of patients that are actively being treated and in P.T.

CASE SUMMARY AUDIT RESULTS

2014 Cases Summary

RETURN TO WORK



66% of all patients were release to RTW at Full Duty.

16.9% of all patients were transitioned from Light Duty to Full Duty

3.7% of all patients were released to RTW at Light Duty pending RTW at Full Duty.

13.1% off all patients were placed off work for no more than 3 days then released to RTW to either Light Duty or Full Duty.